

GUHRING

THE BEST OF TWO SYSTEMS

THE ADVANTAGES OF HYDRAULIC
CHUCKS & SYNCHRO TAPPING CHUCKS
IN ONE TOOL HOLDER

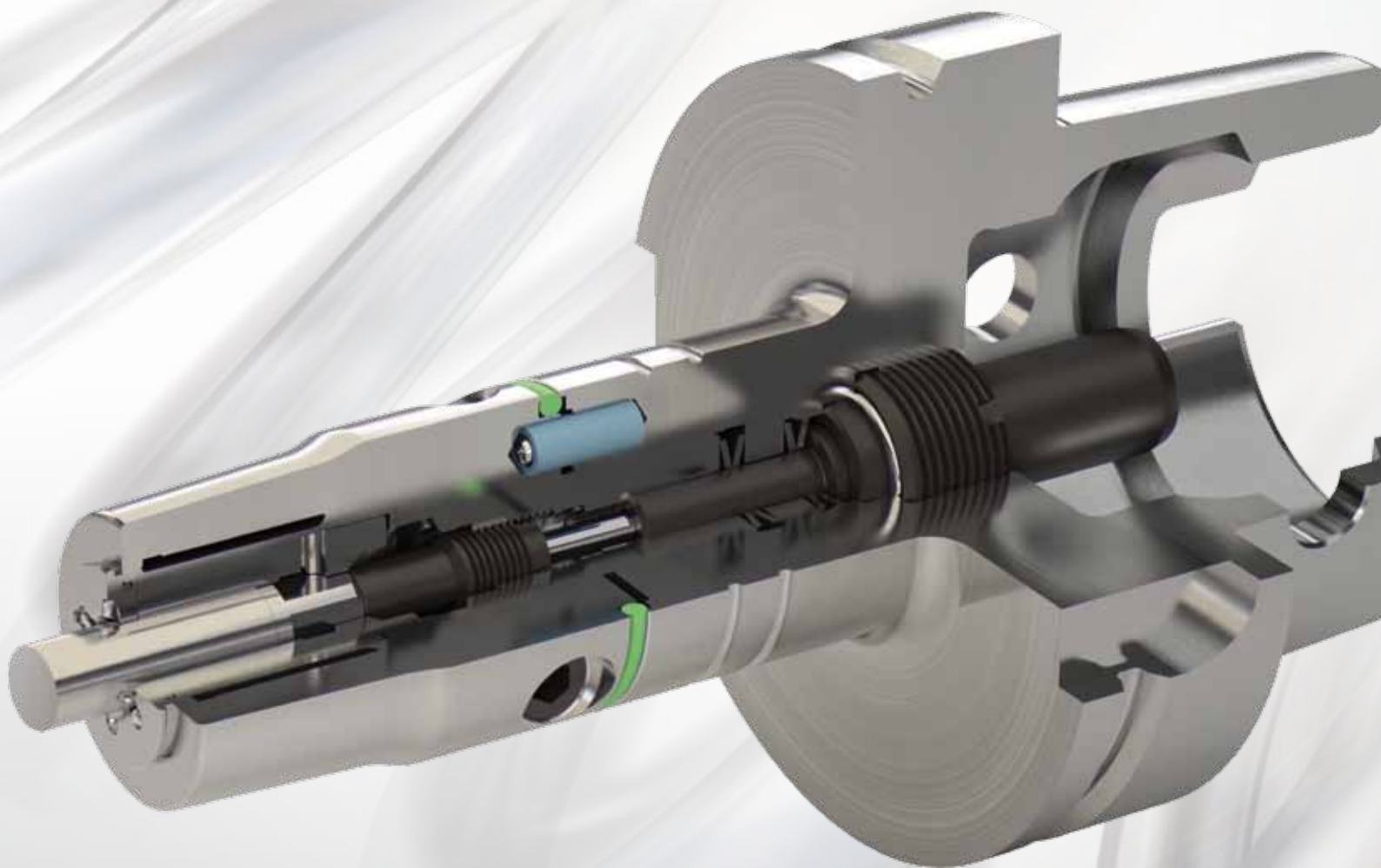


GUHROSync Synchro tapping chucks

GUHRING - YOUR WORLD-WIDE PARTNER

GÜHROSYNC

THE EASY WAY
TO THE PERFECT THREAD



Intelligent design:

As well as the suspension and damping elements in the slender GÜHROSync chucks (for the reduction of axial and radial forces during the tapping process) there is also room for the delivery set for MQL or conventional cooling lubrication and the length setting screw.



**REDUCTION OF AXIAL
AND RADIAL FORCES**



SIMPLE OPERATION



**QUICK AND ACCURATE
LENGTH SETTING OF TOOLS**



**SLENDER
DESIGN**



**IMPROVED
TOOL LIFE**



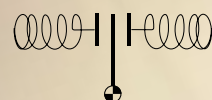
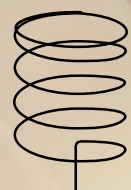
**REDUCED
CYCLE TIMES**



**IMPROVED THREAD
QUALITY**



**GREATER PROCESS
RELIABILITY**



GUHRING

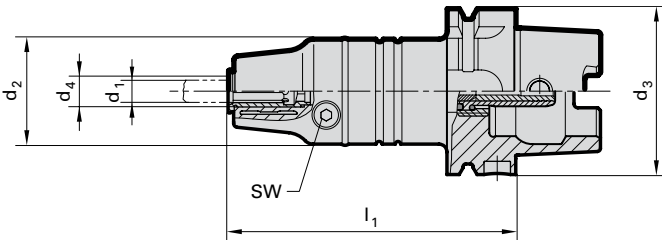
Made visible:
The spring symbol on the
GÜHROSync displays the
effect of axial and radial force.

Product information

- for MQL 2 channel systems
- MQL coolant pressure up to max. 16 bar
- compensate synchronisation errors
- guarantees high thread quality and optimal tool life
- minimal length compensation in tension and compression direction balances very small pitch differences between synchro spindle and tap
- reduces an increase in axial forces during the cutting cycle to a minimum
- convenient hydraulic clamping using reduction bushes with active drive
- length-setting screw allows 3 mm readjustment
- Guhring MQL identifiable by green coloured ring

Scope of delivery

- incl. hexagon clamping key Guhring no. 4912
- incl. MQL coolant delivery set for automatic tool change
- incl. adjustment key for MQL adjustment screws
- order MQL adjustment screw Guhring no. 4305 separatel
- order reduction bushes Guhring no. 4605 or 4606 separately



Guhring no. 4603

Discount group 114

HSK-A d ₃	d ₄ mm	for shank Ø d ₁ x VKT	for thread	d ₂ mm	l ₁ mm	tension/ compr. ± mm	kg	Code no.	Availability
63	12.00	6-10	M5-M12	40	108.5	0.3	1.5	12,063	●
100	12.00	6-10	M5-M12	40	115.0	0.3	2.8	12,100	●
63	20.00	6-16	M8-M20	40	122.5	0.3	1.6	20,063	●
100	20.00	6-16	M8-M20	40	129.0	0.3	2.9	20,100	●

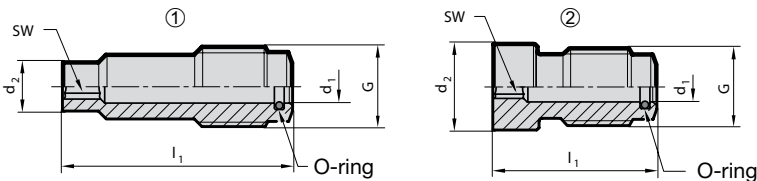
Setting screws "face" synchro tapping chucks, for internal cooling

Product information

- for HSK-A synchro tapping chucks Guhring no. 4601
- for conventional internal cooling
- with facing stop for standard shank ends

Scope of delivery

- with O-ring for secure seal



Guhring no. 4364

Discount group 114

for nom. size	for tap-shank Ø x VKT	G	d ₁ mm	d ₂ mm	l ₁ mm	SW	O-ring	picture	Code no.	Availability
Hydro12	6x4.9	M8x1	3.6	4.8	26.0	2.5	3.5x1	1	6,020	●
Hydro12	7x5.5	M8x1	3.6	5.4	26.0	2.5	3.5x1	1	7,020	●
Hydro12	8x6.2	M8x1	3.6	6.1	21.0	2.5	3.5x1	1	8,020	●
Hydro12	9x7	M8x1	3.6	6.9	20.2	2.5	3.5x1	1	9,020	●
Hydro12	10x8	M8x1	3.6	7.8	16.0	2.5	3.5x1	2	10,020	●
Hydro12	11x9	M8x1	3.6	8.8	15.0	2.5	3.5x1	2	11,020	●
Hydro20	6x4.9	M10x1	4.1	4.8	34.0	3.0	4x1	1	6,032	●
Hydro20	7x5.5	M10x1	4.1	5.4	34.0	3.0	4x1	1	7,032	●
Hydro20	8x6.2	M10x1	4.1	6.1	29.0	3.0	4x1	1	8,032	●
Hydro20	9x7	M10x1	4.1	6.9	28.2	3.0	4x1	1	9,032	●
Hydro20	10x8	M10x1	4.1	7.8	24.0	3.0	4x1	1	10,032	●
Hydro20	11x9 & 12x9	M10x1	4.1	8.8	23.0	3.0	4x1	1	11,032	●
Hydro20	14x11	M10x1	4.1	10.8	20.7	3.0	4x1	2	14,032	●
Hydro20	16x12	M10x1	4.1	11.8	19.7	3.0	4x1	2	16,032	●
Hydro20	18x14.5	M10x1	4.1	14.3	18.0	3.0	4x1	2	18,032	●

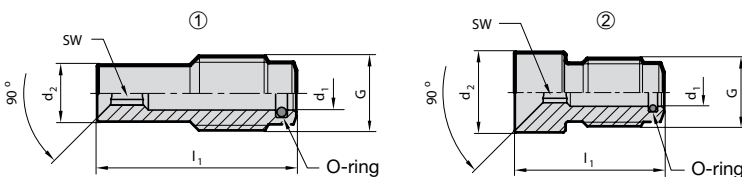
MQL setting screws with internal cone for MQL synchro tapping chucks

Product information

- MQL setting screws with internal cone
- for MQL single and double channel systems
- for MQL taps with external cone
- for MQL synchro tapping chucks Guhring no. 4602, 4603 and 4604

Scope of delivery

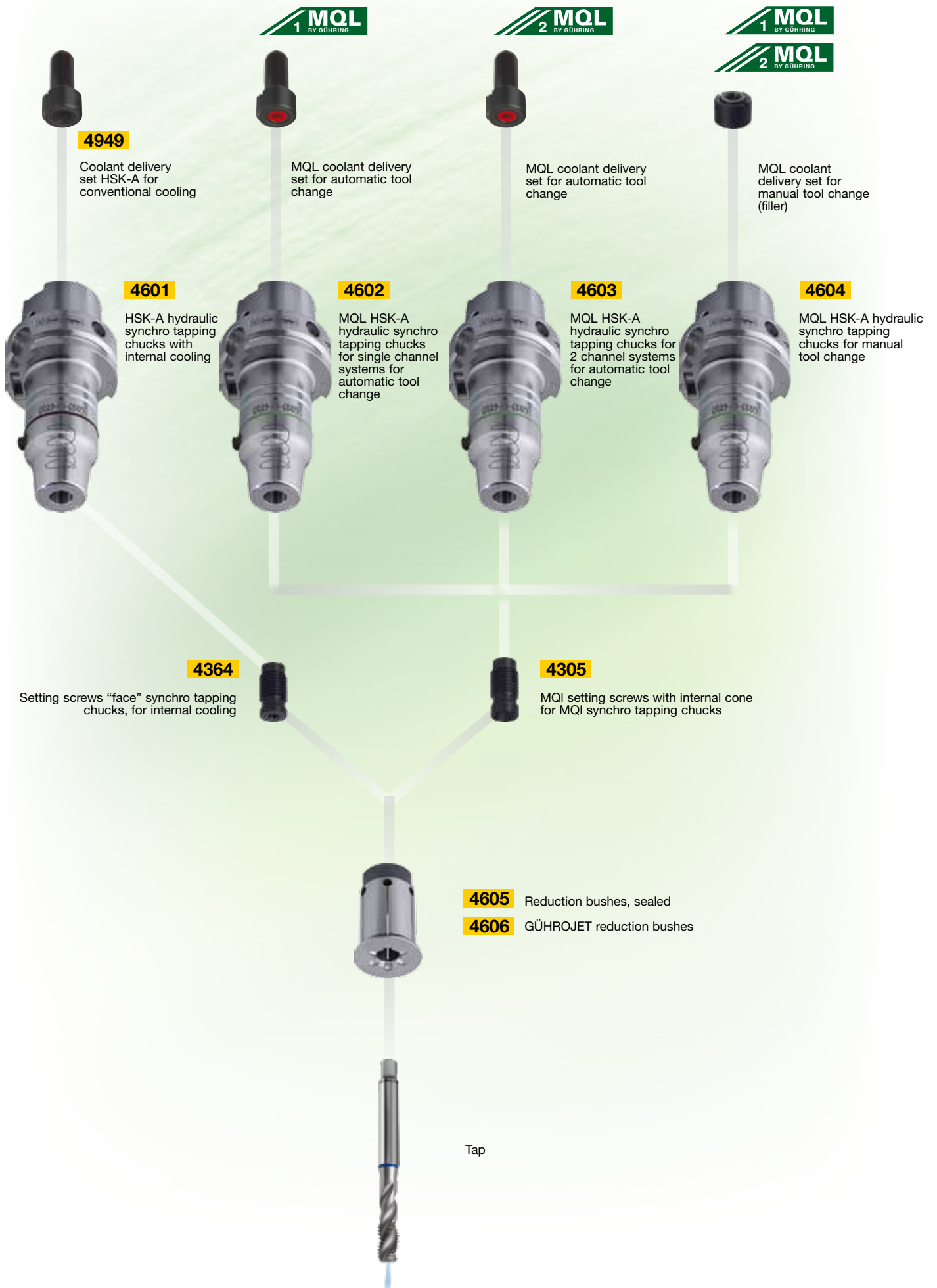
- with O-ring for secure seal



Guhring no. 4305

Discount group 114

nom. size	for tap-shank Ø x VKT	G	d ₁ mm	d ₂ mm	l ₁ mm	SW	picture	Code no.	Availability
Hydro12	6 x 4.9	M 8x1	3.6	4.8	26.5	2.5	1	6,020	●
Hydro12	7 x 5.5	M 8x1	3.6	5.4	26.5	2.5	1	7,020	●
Hydro12	8 x 6.2	M 8x1	3.6	6.1	21.5	2.5	1	8,020	●
Hydro12	9 x 7	M 8x1	3.6	6.9	21.0	2.5	1	9,020	●
Hydro12	10 x 8	M 8x1	3.6	7.8	17.0	2.5	2	10,020	●
Hydro12	11 x 9	M 8x1	3.6	8.9	16.0	2.5	2	11,020	●
Hydro20	6 x 4.9	M10x1	4.1	4.8	34.5	3.0	1	6,032	●
Hydro20	7 x 5.5	M10x1	4.1	5.4	34.5	3.0	1	7,032	●
Hydro20	8 x 6.2	M10x1	4.1	6.1	29.5	3.0	1	8,032	●
Hydro20	9 x 7	M10x1	4.1	6.9	29.0	3.0	1	9,032	●
Hydro20	10 x 8	M10x1	4.1	7.9	25.0	3.0	1	10,032	●
Hydro20	11x9 & 12x 9	M10x1	4.1	8.9	24.0	3.0	1	11,032	●
Hydro20	14 x 11	M10x1	4.1	10.9	22.5	3.0	2	14,032	●
Hydro20	16 x 12	M10x1	4.1	11.9	22.0	3.0	2	16,032	●
Hydro20	18x14.5 & 20x16	M10x1	4.1	14.3	20.5	3.0	2	18,032	●



DRILLING

TAPPING/THREAD MILLING/
FLUTELESS TAPPING

MILLING

REAMING

PCD



SPECIAL TOOLING
SOLUTIONS

COUNTERSINKING/
DE-BURRING

MODULAR TOOLING
SYSTEMS

TOOL RESTORATION SERVICE

GUHRING

Guhring oHG

P.O. Box 100247 • 72423 Albstadt
Herderstraße 50-54 • 72458 Albstadt

Tel. +49 74 31 17-0
Fax +49 74 31 17-21279
info@guehring.de
www.guehring.de